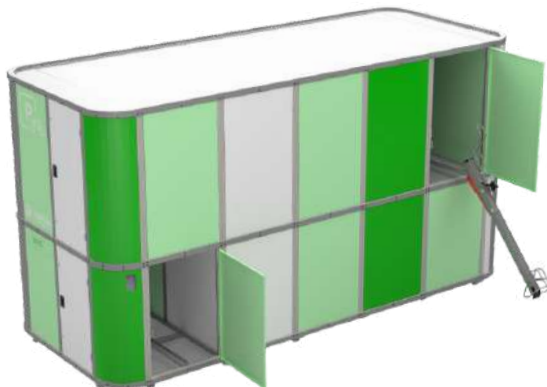


Features

C4



upandbike® C4 is a modular bicycle parking system designed for individual parking and a two-level option. Its upper system has an assisted lifting system using gas shock absorbers, minimizing user effort. The robust galvanized steel construction and steel bearings guarantee a long service life. It supports all types of bicycles and accessories, allowing the frame and wheel to be anchored to fixed elements for greater security.

Technical specifications

Materials and construction

Steel metal structure with anti-corrosion treatment

Sheet metal roof with water drainage

Side closures with perforated steel sheet and smooth steel sheet in vinylable areas

Modular and expandable system

Functionality and use

Door control and opening via the **upandbike App**

Individual space to store accessories (helmet, jacket, backpack, etc.)

Assisted lifting system to the upper level with gas shock absorbers, minimizing user effort

Safety and protection

Interior supports to anchor the bike/scooter securely

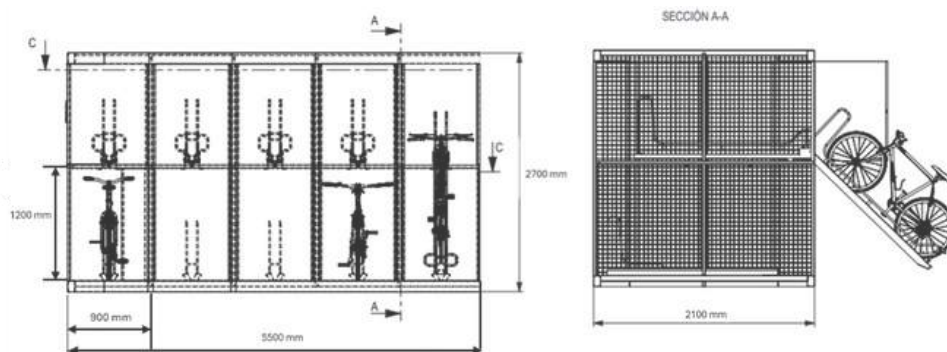
Installation and design

Customizable vinyl

Integrated design in the urban environment

Direct anchoring to the ground (asphalt or cement) / Easy relocation / No civil works required

LED interior and exterior lighting



Features

C4



Extras

The **upandbike® C4** model has optional extras:

- E-bike charging points (Schuko type plug)
- Video surveillance system
- Repair and maintenance kit
- Solar panel kit with battery

C4 model installed

Sample of the **upandbike® C4** model.

